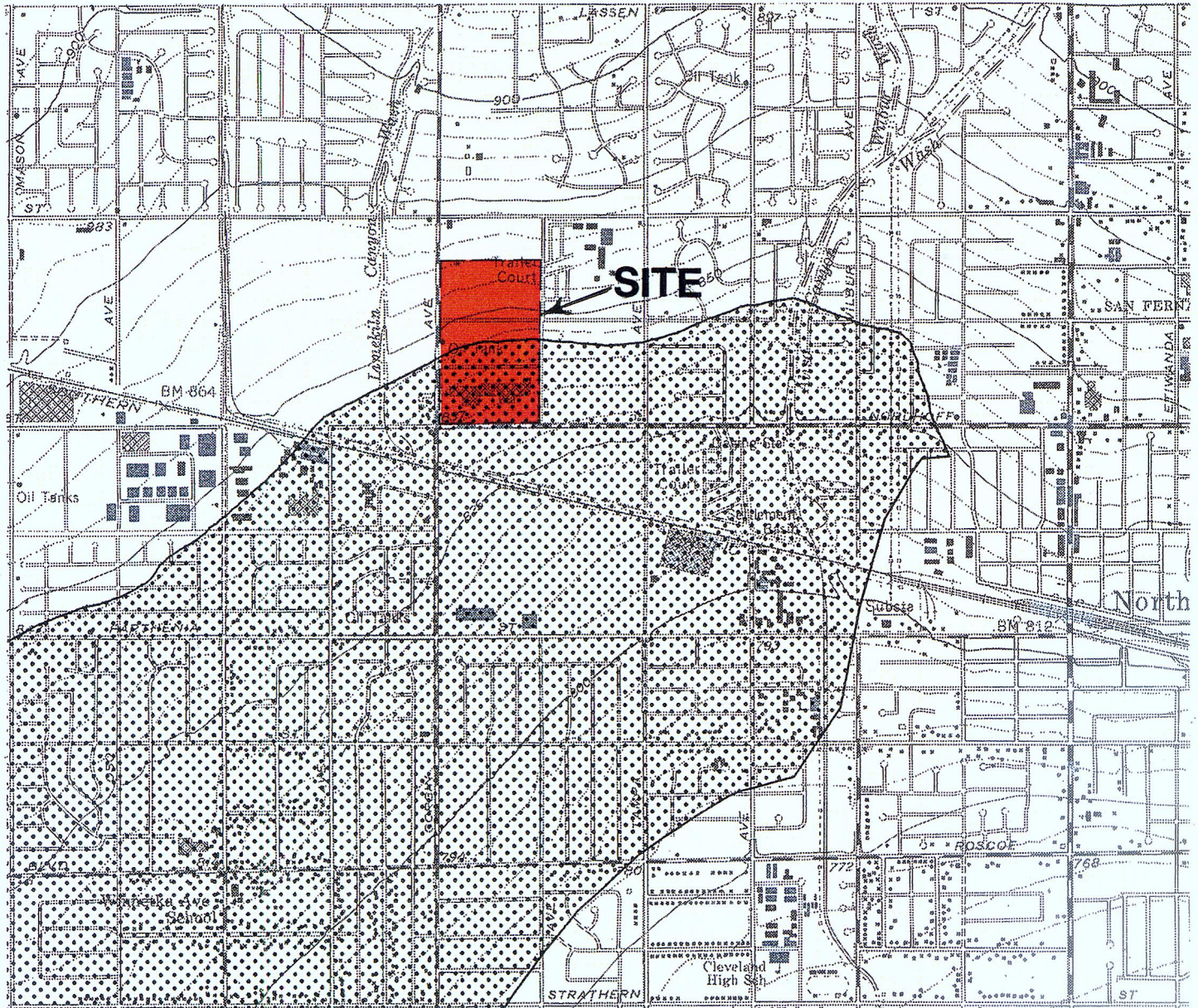


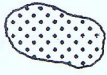
JOB 20131-2-0125  
 DATE 05-31-02  
 F.T.  
 DR. Ped  
 O.E. S.F.K.  
 CHKD  
 S.K.



**EXPLANATION:**

**Liquefaction**

Areas where historic occurrence of liquefaction, or local geological, geotechnical and groundwater conditions indicate a potential for permanent ground displacements such that mitigation as defined in Public Resources Code Section 2693(c) would be required.



**Earthquake-Induced Landslides**

Areas where previous occurrence of landslide movement, or local topographic, geological, geotechnical and subsurface water conditions indicate a potential for permanent ground displacements such that mitigation as defined in Public Resources Code Section 2693(c) would be required.



**REFERENCE:**

California Division of Mines and Geology, 1998, "State of California Seismic Hazard Zones, Canoga Park Quadrangle," Released February 1, 1998.



**SEISMIC HAZARD ZONE MAP**

SCALE 1" = 2000' (0.61 km)